



Investing in your future

OPERATION PART FINANCED BY THE EUROPEAN UNION
European Regional Development Fund

route.Plexor

SMART CITIES Conference

route.Plexor

Alen Orbanić

PhD

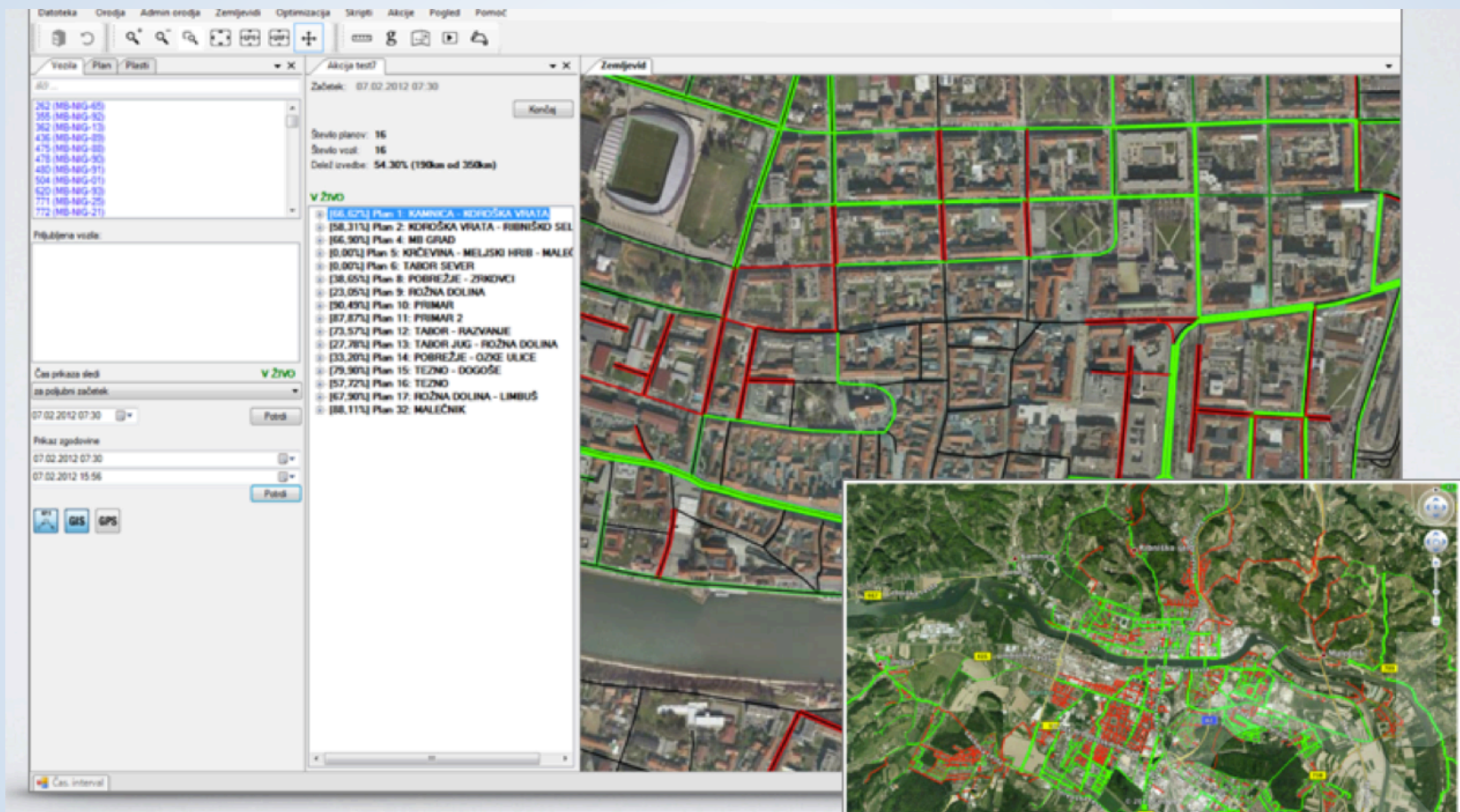
UP IAM/Abelium

- GPS data from vehicles
- GIS data about infrastructure
- Logistic challenges
 - Winter service (planning, execution)
 - Port of Koper, container terminal
 - Real estate ownership database management
 - TISAR – editing of transportation infrastructure data
- (Big) data analytics and visualization

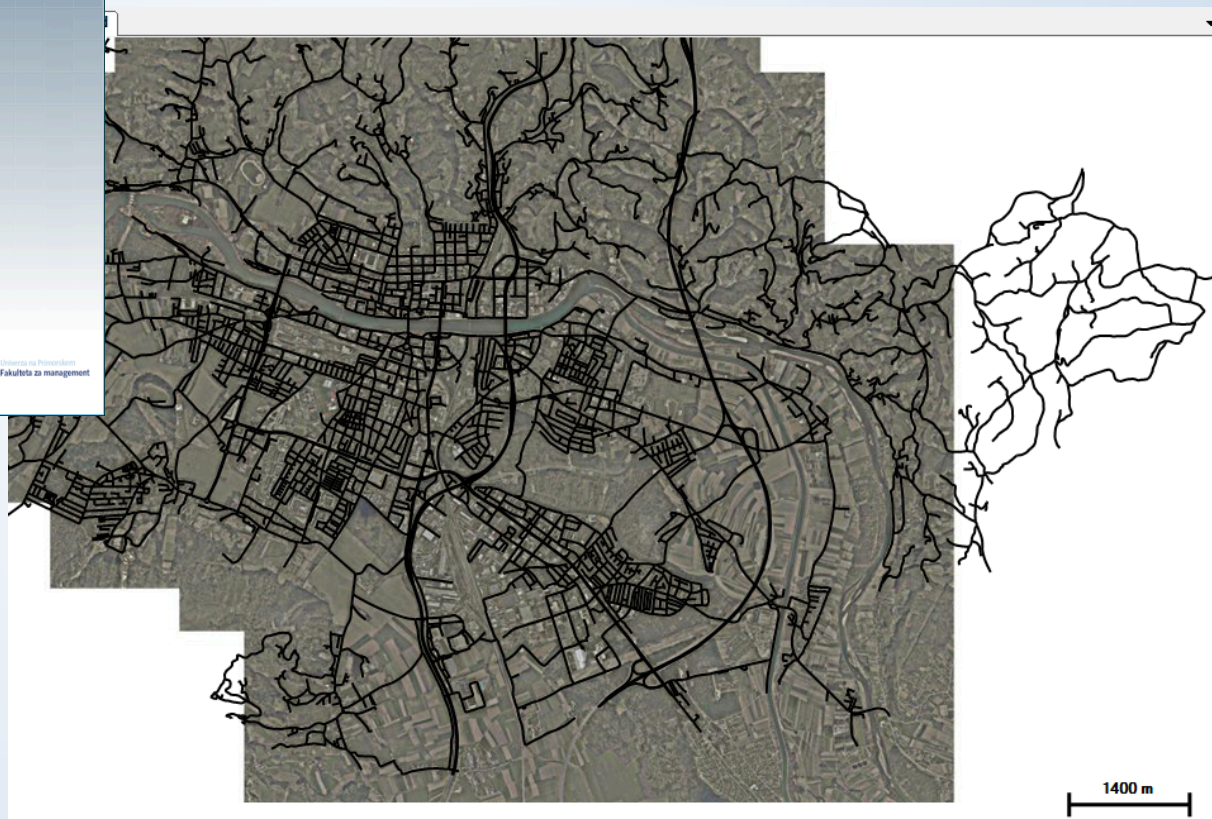


- A tool for managing transport data
- C# desktop application
- Central GPS data database
- Geolocated orto-photo (tile server)
- Central version control for GIS data
- Web services and web xapplication for inspection of the state of execution
- Integration with scripting language Python for data analytics
- Animations





- Authentication, visualization



- Vehicle tracking
- Plowing & salting plans
- GIS and road layer
- Monitoring progress of plan execution

Vozila Plan Plasti

93

- 101939 (AR 62/2)
- 993 (AV-26-2)
- 101934 (MB NIG-84)
- 101935 (MB NIG-86)
- 101920 (MB NIG-93)
- 793 (MB-NIG-57)
- 620 (MB-NIG-93)

Prijubljena vozila:

Čas prikaza sledi V ŽIVO

za zadnje uro

Prikaz zgodovine

13.12.2013 05:15

13.12.2013 06:15

Potrdi

GIS
GPS

Vozila Plan Plasti

Skupine planov:

- Plužni plani 2012/2013 (0)
- Posipni plani 2012/2013 (1)
- Nigrad-test (2)
- Optimizacijski testi (3)
- Plan 13/14 (4)

Plužni plani 2012/2013:

- Plan 1: KAMNICA - KOROŠKA VRATA -
- Plan 2: KOROŠKA VRATA - RIBNIŠKO
- Plan 3: PEKEL
- Plan 4: MB GRAD -> 101984
- Plan 5: KRČEVINA - MELJSKI HRIB - M
- Plan 6: TABOR SEVER -> 102074
- Plan 7: STUDENCI - KAMNICA
- Plan 8: POBREŽJE - ZRKOVCI -> 10187
- Plan 9: ROŽNA DOLINA -> 101906
- Plan 10: PRIMAR -> 101921
- Plan 11: PRIMAR 2 -> 101916
- Plan 12: TABOR - RAZVANJE -> 10187
- Plan 13: TABOR JUG - ROŽNA DOLINA
- Plan 14: POBREŽJE - OZKE ULICE -> 1
- Plan 15: TEZNO - DOGOŠE -> 101857
- Plan 16: TEZNO -> 101875
- Plan 17: ROŽNA DOLINA - LIMBUŠ -> 1
- Plan 18: OZKE ULICE TEZNO - DOGOŠ
- Plan 19: RAZVANJE
- Plan 20: OZKE ULICE STUDENCI-RAD
- Plan 21: ROŽMAN
- Plan 22: LAZNICA - POTOČNIK
- Plan 23: LIMBUŠ-PEKRE-ČREŠNAR
- Plan 24: LIMBUŠ - HRASTJE - KREMLJ
- Plan 25: BRESTERNICA - BRUS
- Plan 26: BRESTERNICA - GRADIŠNIK
- Plan 27: KAMNICA - DOBAJ
- Plan 28: KAMNICA - MATIČIČ
- Plan 29: BRESTERNICA - GRUŠOVNIK

Akcija 12-2

Začetek: 12.02.2013 06:00

Končaj

Število planov: 2

Število vozil: 2

Delež izvedbe: 59.73% (31km od 52km)

V ŽIVO

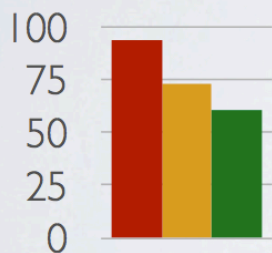
- [62.29%] Plan 10: PRIMAR
 - [62.29%] 101921 (MB NIG-47)
- [57.66%] Plan 11: PRIMAR 2
 - [57.66%] 101916 (MB NIG-55)

Vozila Plan Plasti

Plasti:

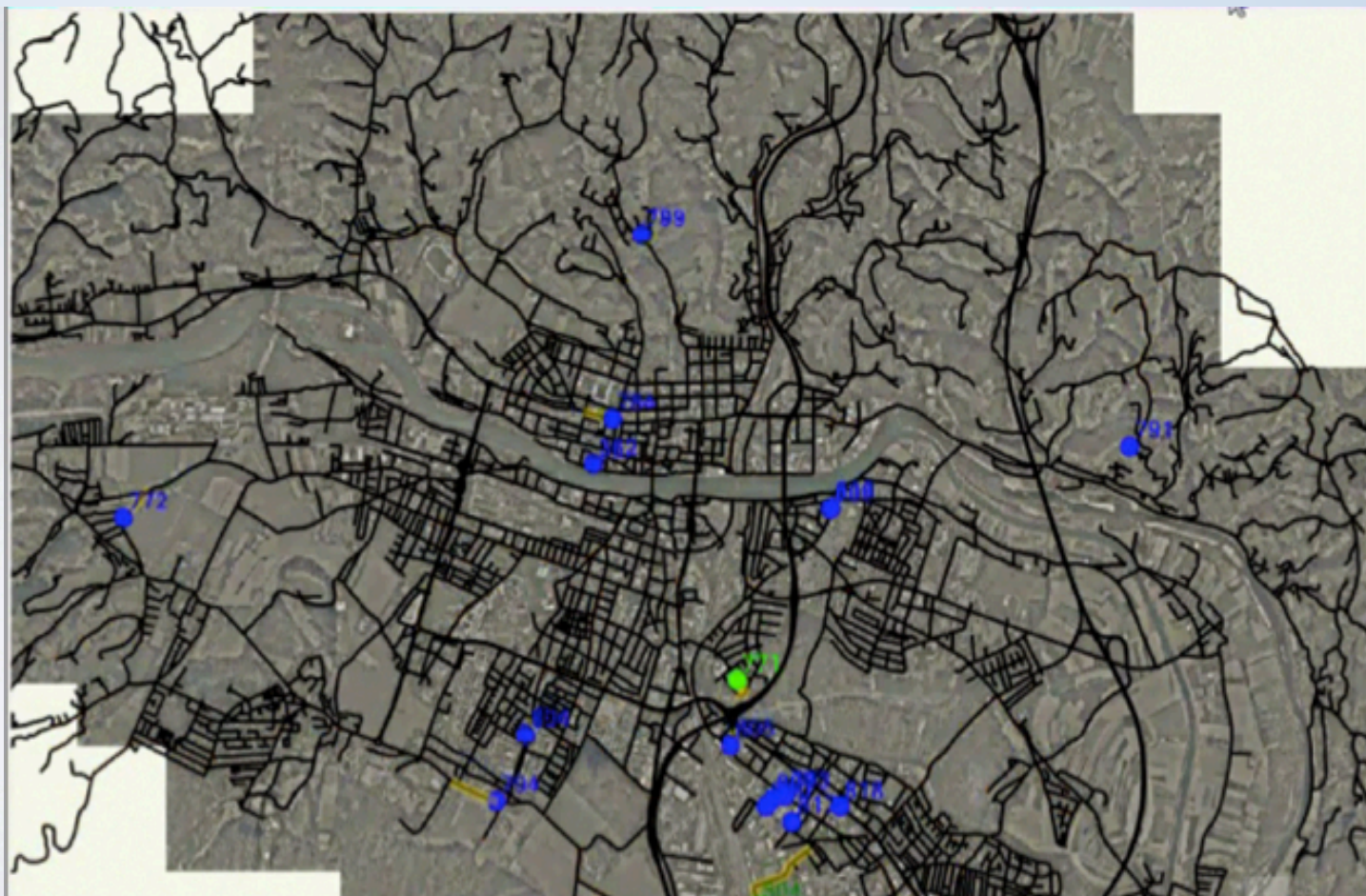
- >Menilo
- Točke
- >Povezave
- >Slike (Maribor)
- Slike (okolica)

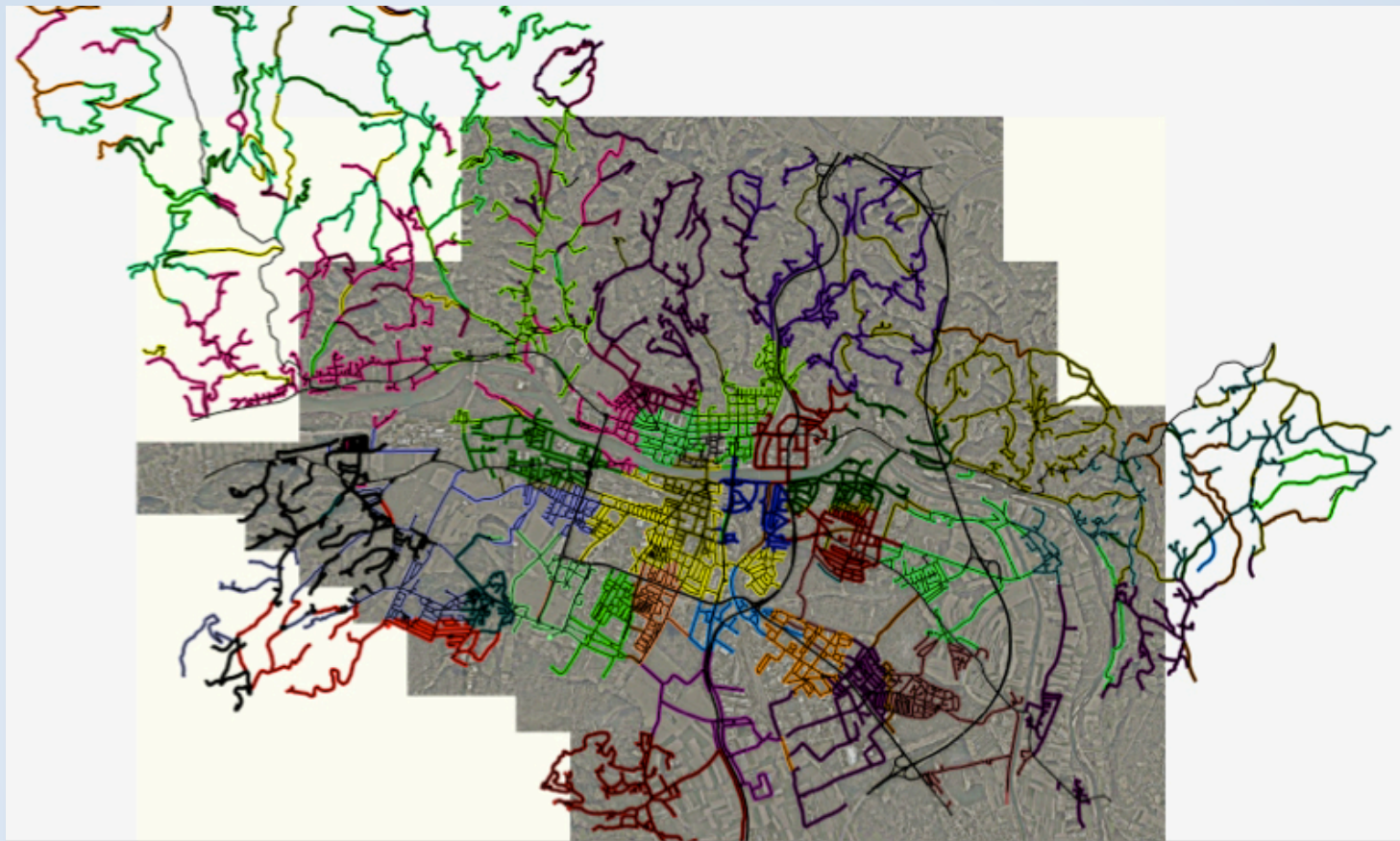




- actual action
- optimal acc. to plan
- optimal as required

7-25% less km

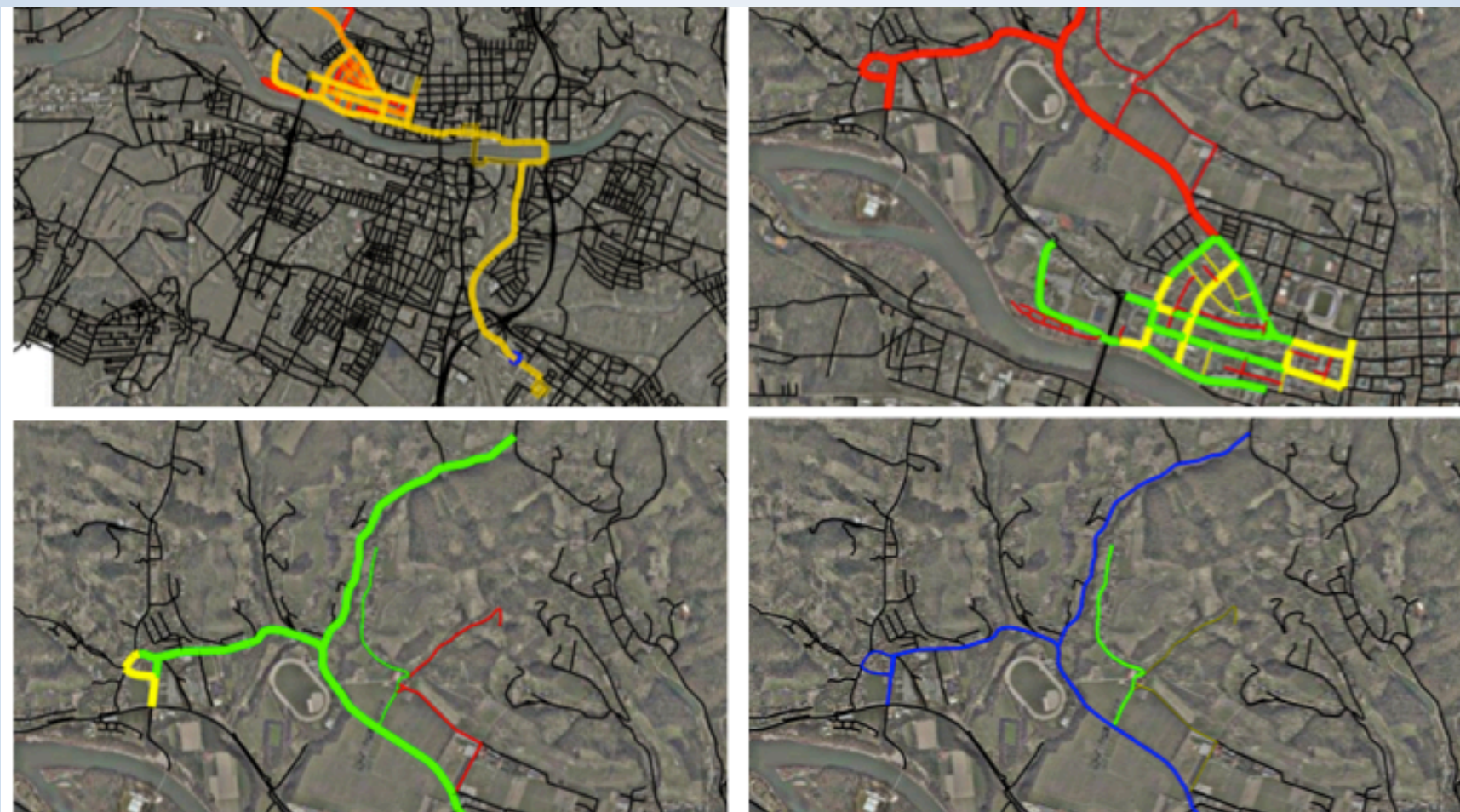


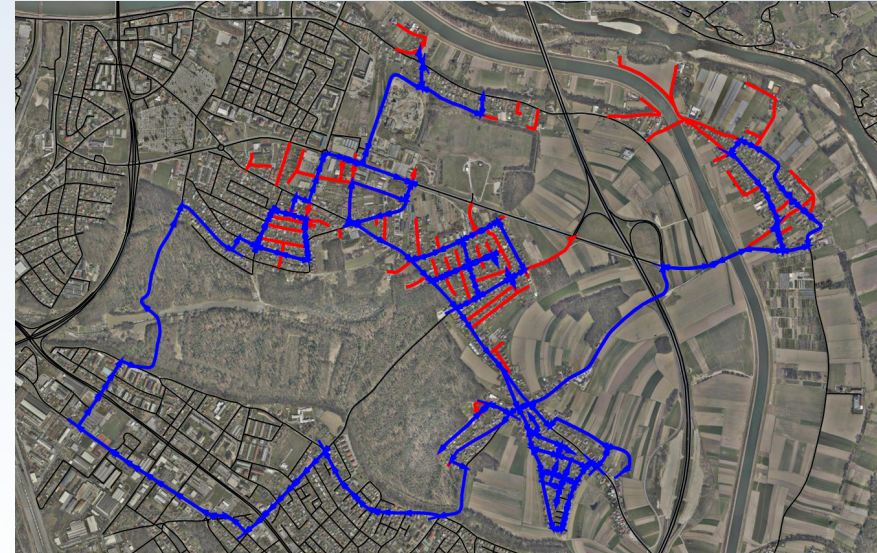


One vehicle

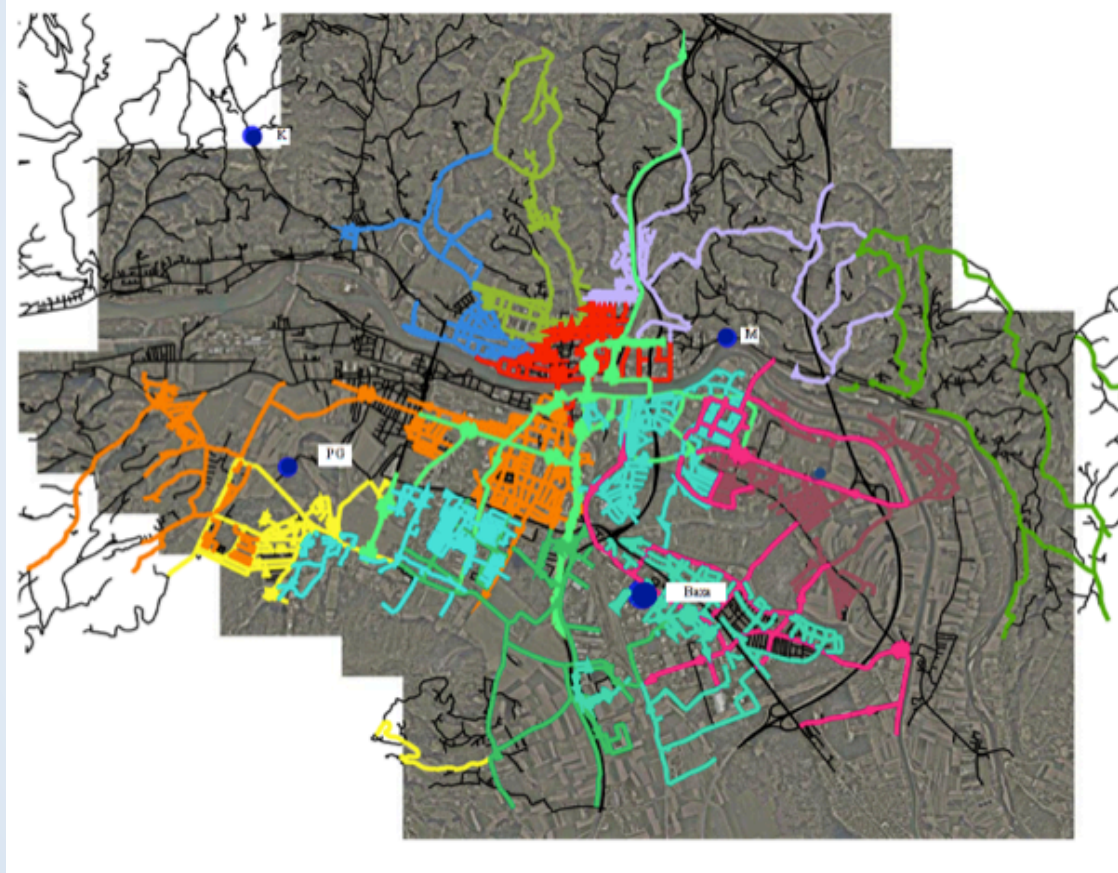
Many vehicles



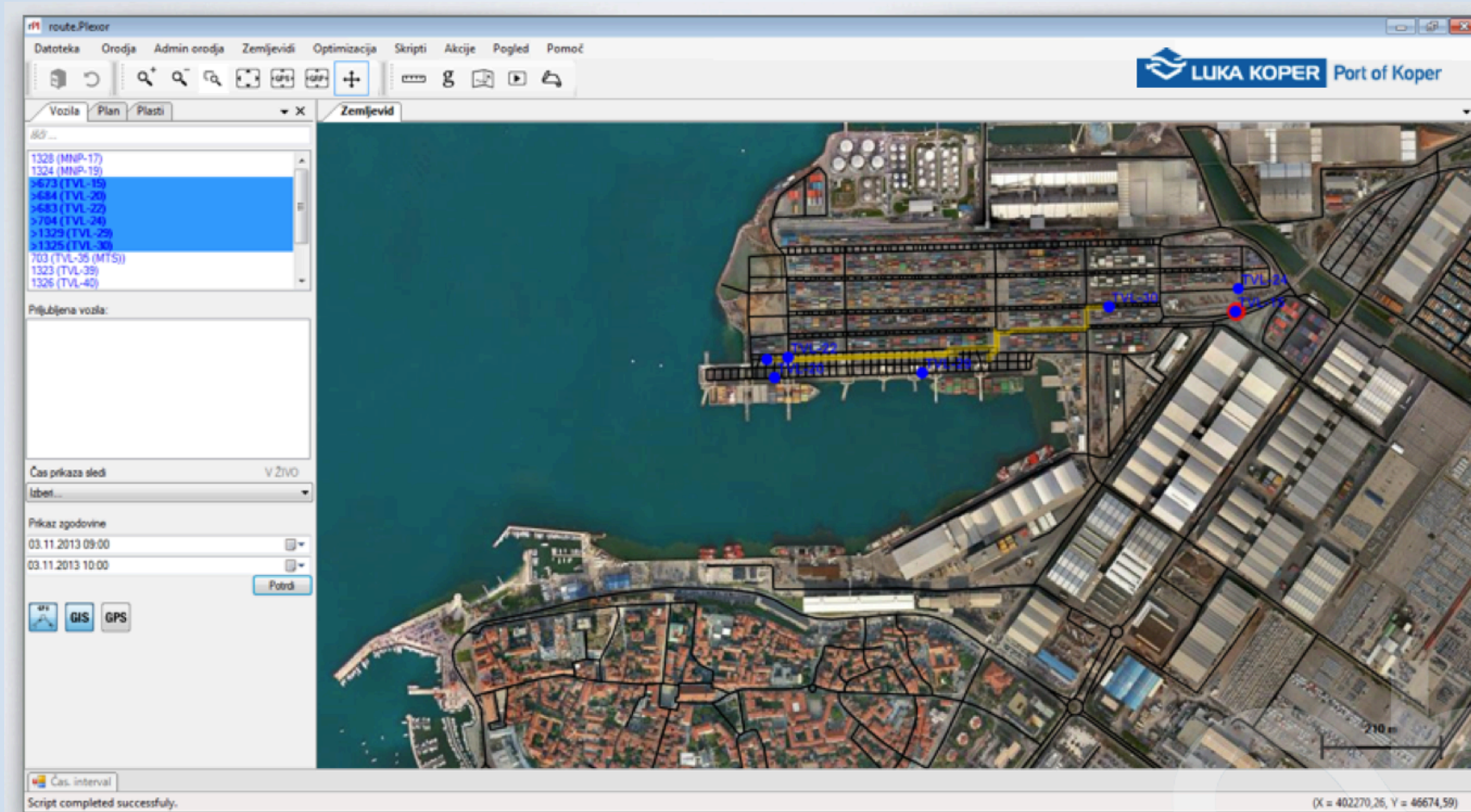




- Distribution of salting stations (additional 8%)



Port of Koper – Container terminal



- Half a year of GPS data for container manipulation vehicles (every 10 s)
- Detailed orto-photo of the port area
- Linear increase of cargo => “quadratic” rise of energy
- Work in progress ...



Thank You

Alen Orbanic
UP IAM/Abelium

Alen.Orbanic@upr.si

